



ESQUALO
OVERVIEW

Winter Collection 2026

Del. Sept 15 - Oct 25, 2026



 Jacket W26.11700 | Sweater W26.07709 | Trousers W26.07710

WINTER 2026

WARM WINTER

The Winter '26 collection captures the essence of the season, where comfort meets statement style. Designed for confident, modern women, this collection brings together warmth, versatility and an elegant, feminine edge. From everyday essentials to standout party pieces, Winter '26 is made to carry you through every moment of the season.

The collection is built around three distinctive themes, each with its own unique mood.



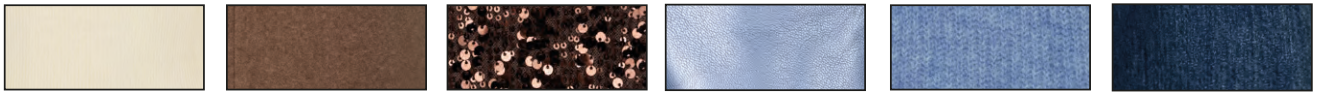
SCAN FOR
PRE-CAMPAIGN

Let's welcome
WINTER 2026

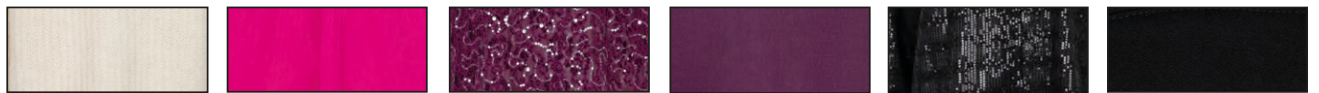


SCAN FOR
ONLINE BROCHURE

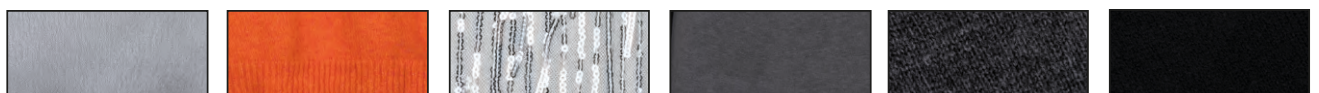
WINTER SKY



AFTER GLOW



FIRE LADY



ESQUALO

WINTER SKY



Q Blouse W26.28708 | Trousers W26.10727

Q Sweater W26.02709 | Skirt W26.14703



Q Sweater W26.05706 | Trousers W26.05707



Q Jacket W26.05700
Top W26.30716
Trousers W26.05702



Q Blazer W26.10726
Top W26.30724
Trousers W26.10727





Q Sweater W26.07712 | Top W26.30724 | Trousers W26.12704

Q Blouse W26.14706 | Trousers W26.12706

WINTER SKY



BLAZER MODAL STRIPED W26.05701



SWEATER BOXY SEQUINS W26.02710



TOP JERSEY NECK DETAIL W26.30718



SKIRT POLKA DOT W26.10701



Q Cardigan W26.18700 | Trousers W26.12704



Q Blouse W26.10700 | Skirt W26.11704



Q Cardigan W26.18700 | Blouse W26.10711 | Trousers W26.28705



AFTER GLOW



Q Blazer W26.10726 | Top W26.30710 | Trousers W26.10727 Q Blouse W26.15703 | Trousers W26.11702



Q Dress W26.05704



Q Blouse W26.28714 | Trousers W26.12702



Q Cardigan W26.02719 | Top W26.30716 | Skirt W26.11703





Q Dress W26.08707 | Bag W26.08709

Q Top W26.08703 | Skirt W26.08704

AFTER GLOW



JACKET VELOUR SEQUINS W26.08711



BLOUSE TRUMPET SLEEVE LACE W26.28708



TROUSERS SEQUINS STRIPE W26.08718



BAG SEQUINS W26.08709



Q Sweater W26.18701 | Top W26.30724 | Trousers W26.12700



Q Blazer W26.37702
Top W26.30724
Trousers W26.11706



Q Top W26.30704 | Trousers W26.11706



FIRE LADY



Q Blouse W26.10709 | Trousers W26.12702 Q Cardigan W26.02719 | Sweater W26.07705 | Trousers W26.11706



Q Blazer W26.10722
Sweater W26.07715
Trousers W26.10724



Q Sweater W26.02715
Singlet W26.30722
Trousers W26.10730



Q Blouse W26.10706 | Trousers W26.12700





FIRE LADY



BLOUSE SMOCK LADY OF STRIPES W26.10705



SWEATER BEADED COLLAR W26.02702



SWEATER SEQUIN FLOWERS W26.18704



GILET FAUX FUR W26.37700



Q Gilet W26.37700 | Top W26.30724 | Trousers W26.10730



Q Dress W26.18706



Q Blouse W26.10733 | Trousers W26.12702





W26.02700
Cardigan lace detail
Size: XS - 2XL
Black
\$54.00 / \$124.00
50% Viscose - 28% Polyamide -
22% Polyester



W26.02702
Sweater beaded collar
Size: XS - 2XL
Black - Charcoal Melange -
Vanilla
\$48.00 / \$109.00
45% Acrylic - 35% Polyamide -
20% Polyester



W26.02704
Sweater short slve 3D flowers
Size: XS - 2XL
Black - Coffee
\$41.00 / \$94.00
50% Nylon - 35% Wool - 15%
Acrylic



W26.02706
Sweater rib l/slve studs
Size: XS - 2XL
Vanilla - Fire - Dark Sky Blue
\$41.00 / \$94.00
44% Polyester - 30% Acrylic -
20% Nylon - 6% Wool



W26.02708
Sweater sequin flowers
Size: XS - 2XL
Black - Vanilla -
\$46.00 / \$104.00
50% Polyamide - 20% Wool -
15% Acrylic - 15% Polyester



W26.02709
Sweater big argyle
Size: XS - 2XL
Coffee - Berry
\$41.00 / \$94.00
50% Polyamide - 20% Wool -
15% Acrylic - 15% Polyester



W26.02710
Sweater boxy sequins
Size: XS - 2XL
Vanilla - Sky Blue Melange
\$50.00 / \$114.00
50% Polyamide - 20% Wool -
15% Acrylic - 15% Polyester



W26.02712
Cardigan flower embroidery
Size: XS - 2XL
Vanilla - Dark Coffee
\$57.00 / \$129.00
50% Nylon - 35% Wool -
15% Acrylic



W26.02715
Sweater rib ruffle trumpet slve
Size: XS - 2XL
Black - Grey Melange
\$46.00 / \$104.00
47% Nylon - 23% Acrylic - 22%
Polyester - 5% Silk - 5% Wool



W26.02719
Cardigan argyle
Size: XS - 2XL
Black - Charcoal Melange
\$52.00 / \$119.00
50% Rec. Poly - 15% Poly - 13%
Acrylic - 13% Nylon - 6% Wool -
3% Spandex



W26.03700
Sweater open big col
Size: XS - 2XL
Vanille - Sky Blue Melange
\$54.00 / \$124.00
51% Polyester - 27% Wool -
15% Nylon - 7% Alpaca



W26.03702
Cardigan slv/lss knit
Size: S-M-L
Light Grey Melange - Vanilla -
Berry
\$46.00 / \$104.00
48% Rec. Polyester - 36% Nylon -
11% Acrylic - 5% Wool



W26.03703
Sweater 7/8 sleeve knit
Size: XS - 2XL
Light Grey Melange - Vanilla - Berry
\$39.00 / \$89.00
48% Rec. Polyester - 36% Nylon - 11% Acrylic - 5% Wool



W26.03704
Sweater leopard
Size: XS - 2XL
Light Grey Melange
\$41.00 / \$94.00
68% Acrylic - 28% Polyester - 4% Spandex



W26.05700
Jacket short modal striped
Size: XS - 2XL
Charcoal Melange - Coffee
\$57.00 / \$129.00
48% Modal - 48% Polyester - 4% Elastane



W26.05701
Blazer modal striped
Size: XS - 2XL
Charcoal Melange - Coffee
\$96.00 / \$219.00
Shell: 48% Modal - 48% Polyester - 4% Elastane
Lining: 98% Poly - 2% Elastane



W26.05702
Trousers modal striped
Size: XS - 2XL
Charcoal Melange - Coffee
\$61.00 / \$139.00
48% Modal - 48% Polyester - 4% Elastane



W26.05704
Dress embellishment modal
Size: XS - 2XL
Charcoal Melange - Coffee - Beet - Dark Sky Blue
\$74.00 / \$169.00
48% Modal - 48% Polyester - 4% Elastane



W26.05705
Sweater embellishment modal
Size: XS - 2XL
Charcoal Melange - Coffee - Beet - Dark Sky Blue
\$59.00 / \$134.00
48% Modal - 48% Polyester - 4% Elastane



W26.05706
Sweater hoodie fancy buttons modal
Size: XS - 2XL
Charcoal Melange - Coffee - Beet - Dark Sky Blue
\$59.00 / \$134.00
48% Modal - 48% Polyester - 4% Elastane



W26.05707
Trousers jogger modal
Size: XS - 2XL
Charcoal Melange - Coffee - Beet - Dark Sky Blue
\$54.00 / \$124.00
48% Modal - 48% Polyester - 4% Elastane



W26.05709
Sweater flower mesh sleeve
Size: XS - 2XL
Black
\$54.00 / \$124.00
86% Cotton - 14% Polyester



W26.05711
T-shirt "Soho"
Size: XS - 2XL
Vanille
\$24.00 / \$57.00
100% Cotton



W26.05712
T-shirt strass stones
Size: XS - 2XL
Vanilla
\$37.00 / \$84.00
100% Cotton



W26.07700
Sweater s/slve
Size: XS - 2XL
Black - Fire - Sky Blue
\$33.00 / \$74.00
47% Viscose - 30% PBT - 20%
Nylon - 3% Metallic



W26.07702
Sweater turtle neck wool
Size: XS - 2XL
Charcoal Melange - Coffee
Beet
\$57.00 / \$129.00
92% Wool - 6% Nylon - 2%
Metallic



W26.07704
Sweater round neck basic knit
Size: XS - 2XL
Black - Vanille Coffee - Fire -
Berry Sky Blue
\$33.00 / \$74.00
78% Viscose - 22% Nylon



W26.07705
Sweater col slve detail basic knit
Size: XS - 2XL
Black - Vanille Coffee - Fire - Berry
Sky Blue
\$35.00 / \$79.00
78% Viscose - 22% Nylon



W26.07708
Sweater raglan lurex knit
Size: XS - 2XL
Coffee - Beet
\$35.00 / \$79.00
61% Viscose - 22% Polyester -
17% Nylon



W26.07709
Sweater slv/lss lurex knit Size:
XS - 2XL
Coffee - Beet
\$35.00 / \$79.00
61% Viscose - 22% Polyester -
17% Nylon



W26.07710
Trousers lurex knit
Size: XS - 2XL
Coffee - Beet
\$50.00 / \$114.00
61% Viscose - 22% Polyester -
17% Nylon



W26.07712
Sweater embroidered patches
Size: XS - 2XL
Vanille - Sky Blue
\$48.00 / \$109.00
87% Nylon - 9% Viscose - 4%
Polyester



W26.07713
Sweater embellished neck
Size: XS - 2XL
Vanilla - Sky Blue
\$50.00 / \$114.00
87% Nylon - 9% Viscose -
4% Polyester



W26.07715
Sweater l/slve wool mix
Size: XS - 2XL
Black - Vanilla
\$39.00 / \$89.00
50% Polyester - 30% Wool -
20% Acrylic



W26.08700
Jacket flowers
Size: 4 - 16
Coffee
\$79.00 / \$179.00
Shell: 100% Polyester
Lining: 50% Viscose - 50% Poly



W26.08701
Skirt flower
Size: 4 - 16
Coffee
\$39.00 / \$89.00
Shell: 100% Polyester
Lining: 65% Poly - 35% Viscose



W26.08703

Top short slve big sequins

Size: XS - 2XL

Black - Vanilla- Beet

\$48.00 / \$109.00

Shell: 95% Poly - 5% Elastane

Lining: 65% Poly - 35% Viscose



W26.08704

Skirt short big sequins

Size: XS - 2XL

Black - Vanille - Beet

\$39.00 / \$89.00

Shell: 95% Poly - 5% Elastane

Lining: 65% Poly - 35% Viscose



W26.08707

Dress balloon slve sequins

Size: XS - 2XL

Black - Coffee - Beet

\$66.00 / \$149.00

Shell: 95% Poly - 5% Elastane

Lining: 65% Poly - 35% Viscose



W26.08708

Top balloon slve sequins

Size: XS - 2XL

Black - Coffee - Beet

\$46.00 / \$104.00

Shell: 95% Poly - 5% Elastane

Lining: 65% Poly - 35% Viscose



W26.08709

Bag sequins

Size: OS

Black - Coffee - Beet

\$39.00 / \$89.00

Shell: 95% Poly - 5% Elastane

Lining: 100% Polyester



W26.08711

Jacket velour sequins

Size: XS - 2XL

Multi

\$68.00 / \$154

Shell: 100% Polyester

Lining: 50% Viscose - 50% Poly



W26.08716

Skirt fringe sequins

Size: XS - 2XL

Black - Silver

\$50.00 / \$114

Shell: 95% Poly - 5% Elastane

Lining: 65% Poly - 35% Viscose



W26.08718

Trousers sequins stripe

Size: XS - 2XL

Black

\$61.00 / \$139.00

Shell: 100% Polyester

Lining: 65% Poly - 35% Viscose



W26.08724

Blouse embellishment

Size: 4 - 16

Black - Vanille - Berry

\$57.00 / \$129.00 100%

Cotton



W26.10700

Blouse scarf Polka Dot

Size: 4 - 16

Print "Polka Dot"

\$52.00 / \$119.00

55% Viscose - 45% Rayon



W26.10701

Skirt Polka Dot

Size: 4 - 16

Print "Polka Dot"

\$52.00 / \$119.00

Shell: 55% Viscose - 45% Rayon

Lining: 100% Polyester



W26.10705

Blouse smock Lady of Stripes

Size: 4 - 16

Print "Lady of Stripes"

\$48.00 / \$109.00

55% Viscose - 45% Rayon



W26.10706
Blouse basic Lady of Stripes
Size: 4 - 16
Print "Lady of Stripes"
\$50.00 / \$114.00
55% Viscose - 45% Rayon



W26.10709
Blouse bow Sparkling Dots
Size: 4 - 16
Print "Sparkling Dots"
\$52.00 / \$119.00
Shell: 90% Tencel - 10% Poly
Lining: 100% Polyester



W26.10711
Blouse balloon Frozen Sky
Size: 4 - 16
Print "Frozen Sky"
\$48.00 / \$109.00
90% Tencel - 10% Polyester



W26.10712
Blouse Frozen Sky
Size: 4 - 16
Print "Frozen Sky"
\$50.00 / \$114.00
90% Tencel - 10% Polyester



W26.10714
Blazer lurex fancy
Size: 4 - 16
Charcoal
\$84.00 / \$189.00
Shell: 62% Poly - 32% Viscose -
4% Spandex - 2% Metal Lining:
100% Polyester



W26.10715
Trousers wide lurex fancy
Size: 2 - 14
Charcoal
\$63.00 / \$144.00
Shell: 62% Poly - 32% Viscose -
4% Spandex - 2% Metal Lining:
100% Polyester



W26.10716
Skirt short lurex fancy
Size: 4 - 16
Charcoal
\$57.00 / \$129.00
Shell: 62% Poly - 32% Viscose -
4% Spandex - 2% Metal Lining:
100% Polyester




W26.10718
Blouse wrapover rever collar
animal satin
Size: 4 - 16
Charcoal
\$74.00 / \$169.00
Shell: 55% Viscose - 45% Rayon
Lining: 100% Polyester




W26.10719
Trousers animal satin
Size: 2 - 14
Charcoal
\$54.00 / \$114.00
55% Viscose - 45% Rayon





W26.10722
Blazer rhinestones
Size: 4 - 16
Charcoal - Coffee
\$84.00 / \$189.00
Shell: 68% Poly - 22% Rayon - 4%
Spandex - 3% Wool - 3% Tencel
Lining: 100% Polyester




W26.10723
Gilet rhinestones
Size: 4 - 16
Charcoal - Coffee
\$79.00 / \$179.00
Shell: 68% Poly - 22% Rayon - 4%
Spandex - 3% Wool - 3% Tencel
Lining: 100% Polyester




W26.10724
Trousers rhinestones
Size: 2 - 14
Charcoal - Coffee
\$68.00 / \$154.00
Shell: 68% Poly - 22% Rayon - 4%
Spandex - 3% Wool - 3% Tencel
Lining: 100% Polyester



W26.10726
Blazer shiny
Size: 4 - 16
Coffee - Beet
\$68.00 / \$154.00
Shell: 66% Viscose - 34% Poly
Lining: 100% Polyester



W26.10727
Trousers shiny
Size: 2 - 14
Coffee - Beet
\$57.00 / \$129.00
Shell: 66% Viscose - 34% Poly
Lining: 100% Polyester



W26.10730
Trousers straight sidepanels
Size: 2 - 14
Black - Charcoal - Vanilla
\$66.00 / \$149.00
65% Poly - 22% Viscose - 5%
Lyocell - 4% Elastane - 4% Wool



W26.10733
Blouse tie
Size: 4 - 16
Black - Vanilla - Berry
\$48.00 / \$109.00
100% Cotton



W26.11700
Jacket biker embroidery
Size: 4 - 16
Black - Coffee - Beet
\$74.00 / \$169.00
60% PU - 40% Polyester



W26.11701
Trousers wide PU
Size: 2 - 14
Black - Coffee - Beet
\$50.00 / \$114.00
60% PU - 40% Polyester



W26.11702
Trousers barrel PU
Size: 2 - 14
Black - Coffee - Beet
\$50.00 / \$114.00
60% PU - 40% Polyester



W26.11703
Skirt short lace PU
Size: 4 - 16
Black - Charecoal Metallic -
Dark Sky Blue Metallic
\$44.00 / \$99.00
60% PU - 40% Viscose



W26.11704
Skirt long overlap PU
Size: 4 - 16
Black - Charecoal
Metallic - Dark Sky Blue
Metallic
\$57.00 / \$129.00
60% PU - 40% Viscose



W26.11706
Trousers barrel wide PU crinkle
Size: 2 - 14
Black
\$52.00 / \$119.00
50% Viscose - 45% PU - 5% Metal



W26.12700
Trousers jeans straight
Size: 2 - 14
Charcoal
\$54.00 / \$124.00
100% Cotton



W26.12702
Trousers jeans beading balloon
denim
Size: 2 - 14
Charcoal
\$59.00 / \$134.00
100% Cotton



W26.12704
Trousers flair panels denim
Size: 2 - 14
Jeans Blue
\$54.00 / \$124.00
98% Cotton - 2% Spandex



W26.12706
Trousers straight studs denim
Size: 2 - 14
Dark Jeans Blue
\$59.00 / \$134.00
100% Cotton



W26.12708
Trousers wide rhinestones denim
Size: 2 - 14
Black
\$57.00 / \$129.00
98% Cotton - 2% Spandex



W26.14700
Blouse satin lace
Size: 4 - 16
Black - Silver - Dark Sky Blue
\$54.00 / \$124.00
100% Polyester



W26.14701
Top satin lace
Size: 4 - 16
Black - Silver - Dark Sky Blue
\$37.00 / \$84.00
100% Polyester



W26.14702
Trousers wide satin
Size: 2 - 14
Black - Silver - Dark Sky Blue
\$57.00 / \$129.00
100% Polyester



W26.14703
Skirt satin lace
Size: 4 - 16
Black - Silver - Dark Sky Blue
\$48.00 / \$109.00
100% Polyester



W26.14706
Blouse short velvet lace sequins
Size: 4 - 16
Coffee - Beet
\$68.00 / \$154.00
95% Nylon - 5% Spandex



W26.14708
Blouse basic sequins
Size: 4 - 16
Black
\$57.00 / \$129.00
100% Viscose



W26.14714
Blouse broches
Size: 4 - 16
Black - Vanilla - Berry
\$57.00 / \$129.00
100% Cotton



W26.15700
Blouse balloon slve Glowing Blossom
Size: 4 - 16
Print "Glowing Blossom"
\$63.00 / \$144.00
100% Viscose



W26.15701
Blouse scarf Glowing Blossom
Size: 4 - 16
Print "Glowing Blossom"
\$54.00 / \$124.00
100% Viscose




W26.15703
Blouse turtle neck Wild Glow
Size: 4 - 16
Print "Wild Glow"
\$52.00 / \$119.00
55% Viscose - 45% Rayon



W26.15704
Blouse bow Wild Glow
Size: 4 - 16
Print "Wild Glow"
\$54.00 / \$124.00
55% Viscose - 45% Rayon




W26.15706
Blouse bow flock
Size: 4 - 16
Black - Beet
\$50.00 / \$114.00
100% Polyester




W26.17700
Jacket bomber glittercheck
Size: 4 - 16
Print "Glittercheck"
\$77.00 / \$174.00
Shell: 100% Polyester
Lining: 55% Poly - 45% Viscose




W26.17701
Trousers glittercheck
Size: 2 - 14
Print "Glittercheck"
\$63.00 / \$144.00
Shell: 100% Polyester
Lining: 100% Polyester





W26.17704
Blazer wide fit
Size: 4 - 16
Black - Coffee - Beet
\$66.00 / \$149.00
Shell: 76% Polyester - 20% Rayon -
4% Spandex
Lining: 55% Poly - 45% Viscose




W26.17705
Trousers wide
Size: 2 - 14
Black - Coffee - Beet
\$52.00 / \$119.00
Shell: 76% Polyester - 20% Rayon -
4% Spandex
Lining: 55% Poly - 45% Viscose




W26.18700
Cardigan fancy buttons
Size: XS - 2XL
Vanilla Melange - Dark Coffee -
Fire - Berry - Dark Sky Blue
\$37.00 / \$84.00
59% Rec. Poly - 21% Nylon - 11%
Poly - 8% Wool - 1% Spandex




W26.18701
Sweater round neck
Size: XS - 2XL
Vanilla Melange - Dark Coffee -
Fire - Berry - Dark Sky Blue
\$35.00 / \$79.00
59% Rec. Poly - 21% Nylon - 11%
Poly - 8% Wool - 1% Spandex




W26.18702
Sweater contrast
Size: XS - 2XL
Grey Melange
\$41.00 / \$94.00
57% Rec. Poly - 21% Poly - 12%
Viscose - 6% Wool - 4% Spandex




W26.18704
Sweater sequin flowers
Size: XS - 2XL
Grey Melange - Vanilla - Fire
\$41.00 / \$94.00
39% Acrylic - 29% Rec. Poly - 14%
Poly - 9% Nylon - 5% Wool - 4%
Spandex




W26.18706
Dress short seam knit
Size: XS - 2XL
Black - Charcoal Melange
\$50.00 / \$114.00
68% Acrylic - 12% Poly - 11%
Nylon - 6% Wool - 3% Spandex



W26.18708
 Dress long boatneck knit
 Size: XS - 2XL
 Dark Coffee
 \$52.00 / \$119.00
 36% Nylon - 35% Poly - 24%
 Acrylic - 5% Wool



W26.28701
 Dress gathering lurex stretch
 Size: 4 - 16
 Black - Silver - Coffee
 \$57.00 / \$129.00
 Shell: 72% Viscose - 28% Poly
 Lining: 88% Poly - 12% Spandex



W26.28702
 Top flower sequins lurex stretch
 Size: 4- 16
 Black - Silver - Coffee
 \$46.00 / \$104.00
 Shell: 72% Viscose - 28% Poly
 Lining: 88% Poly - 12% Spandex



W26.28704
 Blouse bow wide slve lurex stretch
 Size: XS - 2XL
 Black - Silver - Coffee
 \$48.00 / \$109.00
 72% Viscose - 28% Polyester



W26.28705
 Trousers wide leg ribcord
 Size: 2 - 14
 Vanilla - Dark Sky Blue
 \$54.00 / \$124.00
 88% Polyester - 10% Nylon -
 2% Spandex



W26.28706
 Jacket bomber ribcord
 Size: XS - 2XL
 Vanilla - Dark Sky Blue
 \$68.00 / \$154.00
 Shell: 88% Polyester - 10% Nylon -
 2% Spandex
 Lining: 100% Polyester



W26.28708
 Blouse trumpet slve lace
 Size: 4 - 16
 Black - Vanilla - Coffee
 \$66.00 / \$149.00
 Shell: 100% Polyester
 Lining: 100% Polyester



W26.28710
 Blouse oversized lace
 Size: 4 - 16
 Black - Vanilla - Coffee
 \$61.00 / \$139.00
 Shell: 100% Polyester
 Lining: 100% Polyester



W26.28714
 Blouse cropped balloon velvet
 Size: XS - 2XL
 Berry
 \$46.00 / \$104.00
 97% Polyester - 3% Spandex



W26.28715
 Blouse bow cuffs velvet
 Size: XS - 2XL
 Berry
 48.00 / \$109.00
 97% Polyester - 3% Spandex



W26.28717
 Blazer structure velours
 Size: XS - 2XL
 Black - Beet
 \$83.00 / \$189.00
 Shell: 100% Polyester
 Lining: 100% Polyester



W26.28718
 Camisole structure velours
 Size: XS - 2XL
 Black - Beet
 \$39.00 / \$89.00
 Shell: 100% Polyester Lining:
 100% Polyester



W26.28719
Trousers wide structure velours
Size: XS - 2XL
Black - Beet
\$57.00 / \$129.00
100% Polyester



W26.28721
Blouse striped
Size: 4 - 16
Black - Vanilla
\$41.00 / \$94.00
100% Polyester



W26.30704
Top jersey Wild Glow
Size: XS - 2XL
Print "Wild Glow"
\$33.00 / \$74.00
95% Viscose - 5% Spandex



W26.30708
Top mesh rhinestones
Size: XS - 2XL
Black - Coffeese - Beet
\$54.00 / \$124.00
95% Poly - 5% Spandex



W26.30710
Top mesh Polka Dot
Size: XS - 2XL
Print "Polka Dot"
\$50.00 / \$114.00
95% Polyester - 5% Spandex



W26.30712
Top mesh flock
Size: XS - 2XL
Black
\$50.00 / \$114.00
Shell: 95% Poly - 5% Spandex
Lining: 100% Viscose



W26.30714
Top mesh embroidery sequins
Size: XS - 2XL
Black
\$50.00 / \$114.00
Shell: 95% Poly - 5% Spandex
Lining: 100% Viscose



W26.30716
Top turtle basic
Size: XS - 2XL
Black - Charcoal - Vanilla -
Coffee - Berry
\$28.00 / \$64.00
95% Viscose - 5% Spandex



W26.30718
Top jersey neck detail
Size: XS - 2XL
Black - Charcoal Melange -
Vanilla
\$39.00 / \$89.00
48% Acrylic - 48% Viscose -
4% Spandex



W26.30720
Dress short gathering
Size: XS - 2XL
Color Card: /
\$54.00 / \$124.00
95% Acrylic - 5% Spandex



W26.30722
Singlet lurex straps
Size: XS - 2XL
Black - Charcoal - Vanilla -
Coffee - Beet
\$24.00 / \$54.00
95% Cotton - 5% Spandex



W26.30724

Top long slve lace

Size: XS - 2XL

Charcoal - Vanille - Coffee -

Berry - Beet - Sky Blue

\$35.00 / \$79.00

Shell: 90% Polyamide - 10%

Spandex

Lining: 100% Viscose



W26.37700

Gilet faux fur

Size: S - L

Light Grey - Light

Cinnamon

\$57.00 / \$129.00 Shell:

100% Polyester Lining:

100% Polyester



W26.37702

Blazer oversized embroidered Size:

4 - 16

Black

\$61.00 / \$139.00

Shell: 64% Poly - 34% Rayon - 2%

Elastane

Lining: 100% Poly



W26.37704

Coat poncho faux fur

Size: S - M - L

Black - Coffee

\$57.00 / \$129.00 Shell: 100%

Polyester Lining: 100%

Polyester

STYLES:
W26.02702

STYLES:
W26.02704

STYLES:
W26.02706

STYLES:
W26.02708
W26.02710



Black # 000



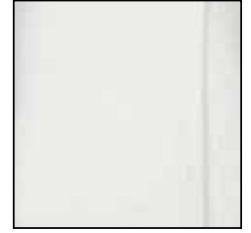
Black # 000



Vanilla # 121



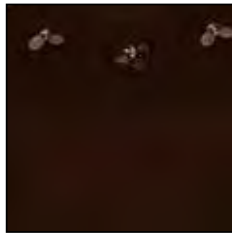
Black # 000



Vanilla # 121



Charcoal Melange
028



Coffee # 185



Fire # 439



Vanilla # 121



Sky Blue Melange
619



Vanilla # 121



Dark Coffee # 184



Dark Sky Blue # 623



Coffee # 185



Berry # 444



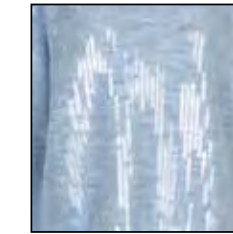
Grey Melange # 039



Beet # 484



Sky Blue # 619



Sky Blue melange
623

STYLES:
W26.02712



Vanille # 121

STYLES:
W26.02709



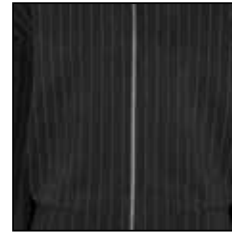
Coffee # 185

STYLES:
W26.02719



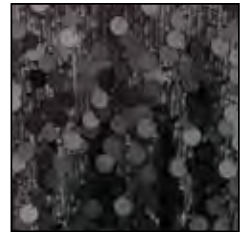
Black # 000

STYLES:
W26.05700
W26.05701
W26.05702



Charcoal Melange
028

STYLES:
W26.08703
W26.08704



Black # 000



Dark Coffee # 184



Berry # 444



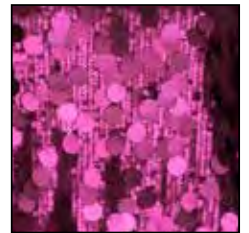
Charcoal Melange
028



Coffee # 185

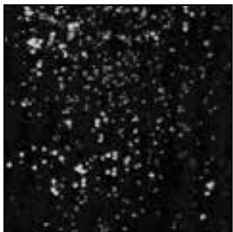


Vanilla # 121



Beet # 484

STYLES:
W26.08707
W26.08708
W26.08709



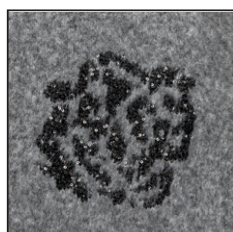
Black # 000

STYLES:
W26.08716



Black # 000

STYLES:
W26.18704



Grey Melange # 039

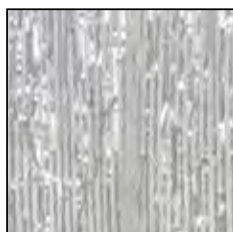
STYLES:
W26.37700



Light Grey # 060



Coffee # 185



Silver # 080



Vanille # 121



Light Cinnamon # 191



Beet # 484



Fire # 439



ESQUALO

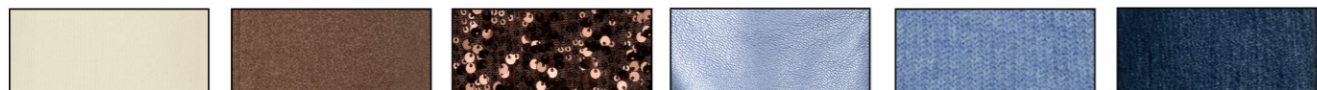
Alphi



1

WINTER SKY

A fresh and calm start to the season. This theme features Sky, Dark sky, Vanille and Coffee, creating a cool yet soft winter palette. Think cozy knits, elegant skirts and playful polka dots that come together in an effortless, modern look.



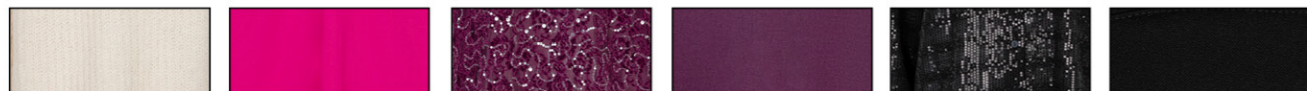
Estimated delivery from : 29 Sept 2026



2

AFTER GLOW

Bold, feminine and full of energy. After Glow brings a strong, glowing feel with Berry, Beet, Black and Vanille. The combination of powerful colours and confident silhouettes creates modern looks with a striking, feminine touch.



Estimated delivery from : 29 Sept 2026

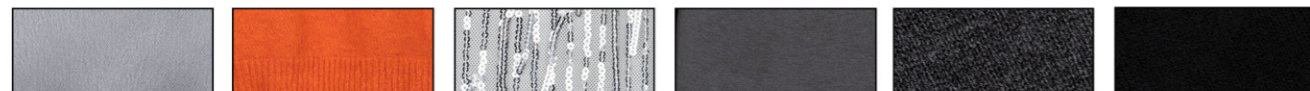




3

FIRE LADY

Warm, powerful and city-inspired. This theme features Fire, Vanille, Light grey, Charcoal and Black, enriched with silver tones for a subtle shine. The vibrant Fire colour adds a bold statement, while the mix of textures creates a strong and sophisticated look, perfect for both day and night.



Estimated delivery from : 29 Sept 2026





W26.03703

Sweater 7/8 sleeve knit

Size: XS - 2XL

Light Grey Melange - Vanilla - Berry

\$39.00 / \$89.00

48% Rec. Polyester - 36% Nylon -

11% Acrylic - 5% Wool



W26.03703

Sweater 7/8 sleeve knit

Size: XS - 2XL

Light Grey Melange - Vanilla - Berry

\$39.00 / \$89.00

48% Rec. Polyester - 36% Nylon -

11% Acrylic - 5% Wool



W26.05700

Jacket short modal striped

Size: XS - 2XL

Charcoal Melange - Coffee

\$57.00 / \$129.00

48% Modal - 48% Polyester - 4% Elastane



W26.05701

Blazer modal striped

Size: XS - 2XL

Charcoal Melange - Coffee

\$96.00 / \$219.00

Shell: 48% Modal - 48%

Polyester - 4% Elastane

Lining: 98% Poly - 2% Elastane



W26.07702

Sweater turtle neck wool

Size: XS - 2XL

Charcoal Melange - Coffee Beet

\$57.00 / \$129.00

92% Wool - 6% Nylon - 2%Metallic



W26.07702

Sweater turtle neck wool

Size: XS - 2XL

Charcoal Melange - Coffee Beet

\$57.00 / \$129.00

92% Wool - 6% Nylon - 2%Metallic



W26.07704

Sweater round neck basic knit

Size: XS - 2XL

Black - Vanille Coffee - Fire - Berry Sky Blue

\$33.00 / \$74.00

78% Viscose - 22% Nylon



W26.07704

Sweater round neck basic knit

Size: XS - 2XL

Black - Vanille Coffee - Fire - Berry Sky Blue

\$33.00 / \$74.00

78% Viscose - 22% Nylon



W26.07705

Sweater col slve detail basic knit

Size: XS - 2XL

Black - Vanille Coffee - Fire - Berry Sky Blue

\$35.00 / \$79.00

78% Viscose - 22% Nylon



W26.07705

Sweater col slve detail basic knit

Size: XS - 2XL

Black - Vanille Coffee - Fire - Berry Sky Blue

\$35.00 / \$79.00

78% Viscose - 22% Nylon



W26.07712

Sweater embroidered patches

Size: XS - 2XL

Vanille - Sky Blue

\$48.00 / \$109.00

87% Nylon - 9% Viscose - 4% Polyester



W26.07713

Sweater embellished neck

Size: XS - 2XL

Vanilla - Sky Blue

\$50.00 / \$114.00

87% Nylon - 9% Viscose - 4% Polyester



W26.11701

Trousers wide PU

Size: 2 - 14

Black - Coffee - Beet

\$50.00 / \$114.00

60% PU - 40% Polyester



W26.11701

Trousers wide PU

Size: 2 - 14

Black - Coffee - Beet

\$50.00 / \$114.00

60% PU - 40% Polyester



W26.14701

Top satin lace

Size: 4 - 16

Black - Silver - Dark Sky Blue

\$37.00 / \$84.00

100% Polyester



W26.14701

Top satin lace

Size: 4 - 16

Black - Silver - Dark Sky Blue

\$37.00 / \$84.00

100% Polyester



W26.14703

Skirt satin lace

Size: 4 - 16

Black - Silver - Dark Sky Blue

\$48.00 / \$109.00

100% Polyester



W26.17700

Jacket bomber glittercheck

Size: 4 - 16

Print "Glittercheck"

\$77.00 / \$174.00

Shell: 100% Polyester

Lining: 55% Poly - 45% Viscose



W26.17701

Trousers glittercheck

Size: 2 - 14

Print "Glittercheck"

\$63.00 / \$144.00

Shell: 100% Polyester

Lining: 100% Polyester



W26.17704

Blazer wide fit

Size: 4 - 16

Black - Coffee - Beet

\$66.00 / \$149.00

Shell: 76% Polyester - 20%

Rayon - 4% Spandex

Lining: 55% Poly - 45% Viscose



W26.17705

Trousers wide

Size: 2 - 14

Black - Coffee - Beet

\$52.00 / \$119.00

Shell: 76% Polyester - 20%

Rayon - 4% Spandex

Lining: 55% Poly - 45% Viscose



W26.18704

Sweater sequin flowers

Size: XS - 2XL

Grey Melange - Vanilla - Fire

\$41.00 / \$94.00

39% Acrylic - 29% Rec. Poly - 14% Poly -

□9% Nylon - 5% Wool - 4% Spandex



W26.18704

Sweater sequin flowers

Size: XS - 2XL

Grey Melange - Vanilla - Fire

\$41.00 / \$94.00

39% Acrylic - 29% Rec. Poly - 14% Poly -

□9% Nylon - 5% Wool - 4% Spandex



W26.18704

Sweater sequin flowers

Size: XS - 2XL

Grey Melange - Vanilla - Fire

\$41.00 / \$94.00

39% Acrylic - 29% Rec. Poly - 14% Poly -

□9% Nylon - 5% Wool - 4% Spandex



W26.28705

Trousers wide leg ribcord

Size: 2 - 14

Vanilla - Dark Sky Blue

\$54.00 / \$124.00

88% Polyester - 10% Nylon - 2% Spandex



W26.28705

Trousers wide leg ribcord

Size: 2 - 14

Vanilla - Dark Sky Blue

\$54.00 / \$124.00

88% Polyester - 10% Nylon - 2% Spandex



W26.28706

Jacket bomber ribcord

Size: XS - 2XL

Vanilla - Dark Sky Blue

\$68.00 / \$154.00

Shell: 88% Polyester - 10% Nylon - 2% Spandex

Lining: 100% Polyester



W26.28706

Jacket bomber ribcord

Size: XS - 2XL

Vanilla - Dark Sky Blue

\$68.00 / \$154.00

Shell: 88% Polyester - 10% Nylon - 2% Spandex

Lining: 100% Polyester



W26.28721

Blouse striped

Black – Vanilla

Size: 4-16

\$41.00 / \$94.00

100% Polyester



W26.28721

Blouse striped

Black – Vanilla

Size: 4-16

\$41.00 / \$94.00

100% Polyester